





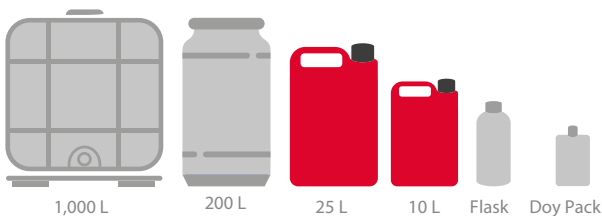
Super Wax - Cera Superencerado

Standards



Product specifications

- Specific weight: 0.975-0.995
- Colour: 
- pH: 
- Drying: 
- Shine: 
- Packaging:



Product description

This product is designed to improve the drying of the vehicle while adding shine.

Storage

Keep tightly closed, avoiding exposure to UV rays and extreme temperatures.
For more information, we recommend reading the safety sheet.

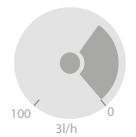
Directions for use

Product designed for:

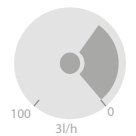


In high-pressure jet wash centres, the product is applied by a dosing pump. Purified water is recommended while maintaining dosing around 10 mL/min, trying to keep the pump percentage around 30%.

A dosing pump is used to apply the product in rollovers and tunnels. Use of purified water is recommended, keeping the dosage around 15 mL/min, trying to keep the percentage of the pump around 30%.



+30%
High-pressure pump



+30%
Bay and tunnel pump

Super Wax

